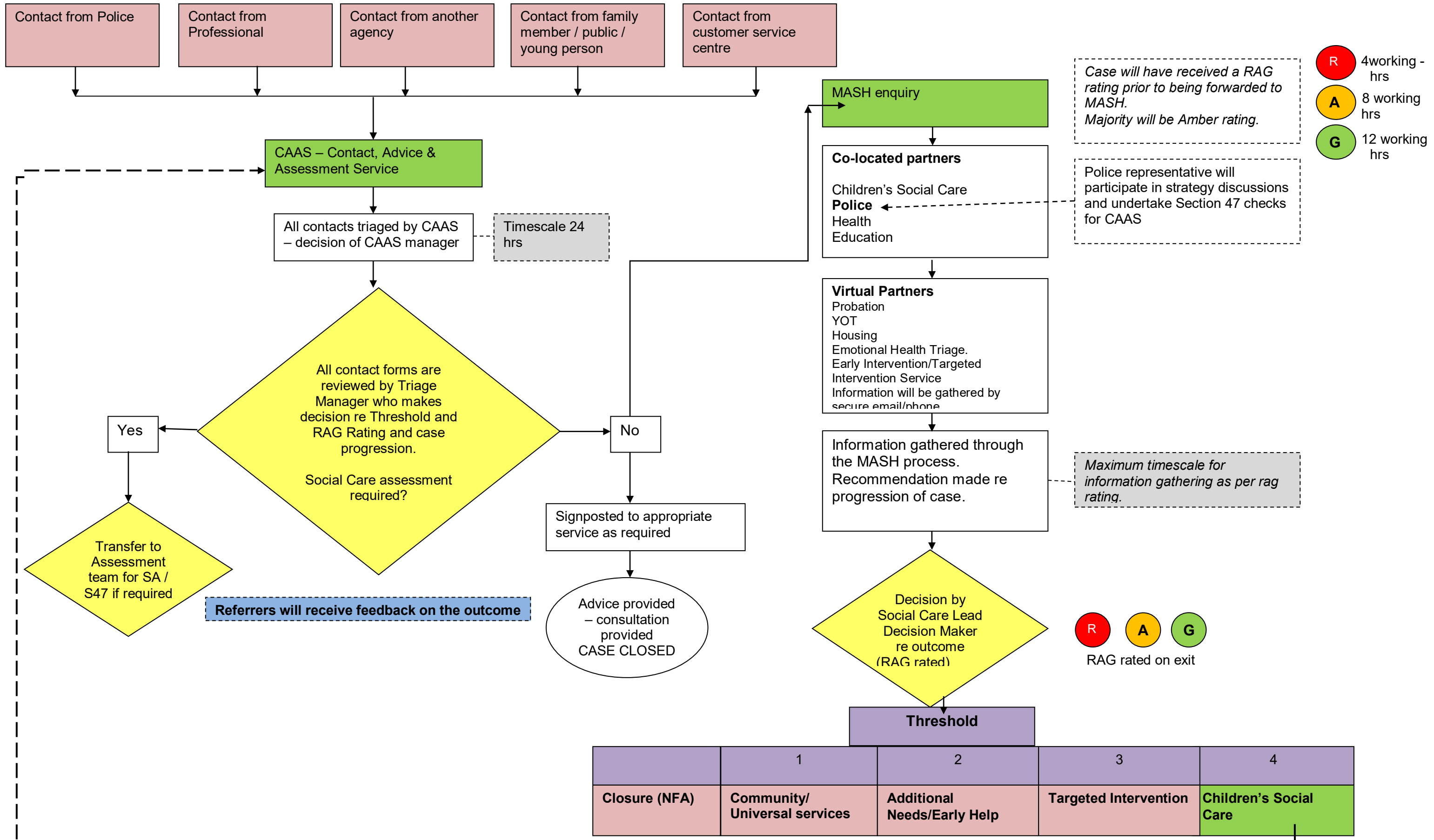


MASH process – West Berkshire Council



- R 4 working hrs
- A 8 working hrs
- G 12 working hrs

Case will have received a RAG rating prior to being forwarded to MASH. Majority will be Amber rating.

Police representative will participate in strategy discussions and undertake Section 47 checks for CAAS

Maximum timescale for information gathering as per rag rating.

● R ● A ● G
RAG rated on exit

Referrers will receive feedback on the outcome